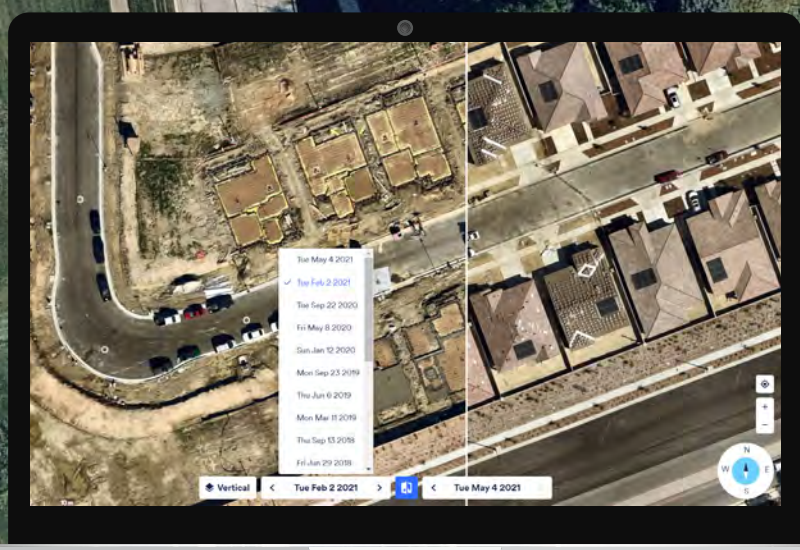


nearmap

NEARMAP FOR GOVERNMENT

DISCOVER NEARMAP

DARIAN, IL, U.S.



Nearmap is a technology company, driven by innovation. Nearmap provides easy, instant access to high resolution aerial imagery, city-scale 3D content, AI data sets, and geospatial tools. Using its own patented camera systems and processing software, Nearmap captures wide-scale urban areas in the United States, Canada, Australia, and New Zealand several times each year, making current content instantly available in the cloud via web app or API integration.

Every day, Nearmap helps thousands of users to conduct virtual site visits for deep, data-driven insights — enabling informed decisions, streamlined operations and better financial performance. Founded in Australia in 2007, Nearmap is one of the largest aerial survey companies in the world.

WHAT MAKES NEARMAP SPECIAL



PROACTIVE SURVEY PROGRAM

We are continuously capturing aerial imagery throughout the United States, 365 days a year. All imagery loaded into our web-based application is time stamped and available within days of capture.



CURRENT IMAGERY

We fly large urban areas up to 3 times per year, frequently capturing seasonal changes for leaf-on/ leaf-off information.



WIDE-SCALE COVERAGE

We cover 80.1% of the U.S. population, including over 1,740 urban areas with over 308,000 square miles captured annually (86.8 million residential U.S parcels and 3.9 million commercial U.S parcels).



CONSISTENTLY HIGH RESOLUTION

Our ortho and oblique imagery is delivered at sub-3" GSD resolution, meaning you can see clearly and plan accurately, before even setting foot on site.



INSTANT ACCESS VIA THE CLOUD

Instantly stream high resolution aerial imagery from Nearmap on any connected device via our web platform, MapBrowser, or integrate through our APIs. Easily view, measure, and export Nearmap content. Offline imagery is also available upon request.

 APEX, NC U.S.

WHAT OUR CUSTOMERS SAY

"I really like how Nearmap is integrated into the GIS stack. We're able to stay on top of new developments, roads, and addresses. Being able to have Nearmap imagery integrated into our GIS systems helps us be much more accurate."

—Timothy Zimmer
GIS Administrator, Shelby County 9-1-1

"Before Nearmap, we were already two years behind on our imagery capture through our county commission. With Nearmap, my view has never been clearer or more up-to-date. I can view new construction, such as buildings and pools, which has been extremely helpful."

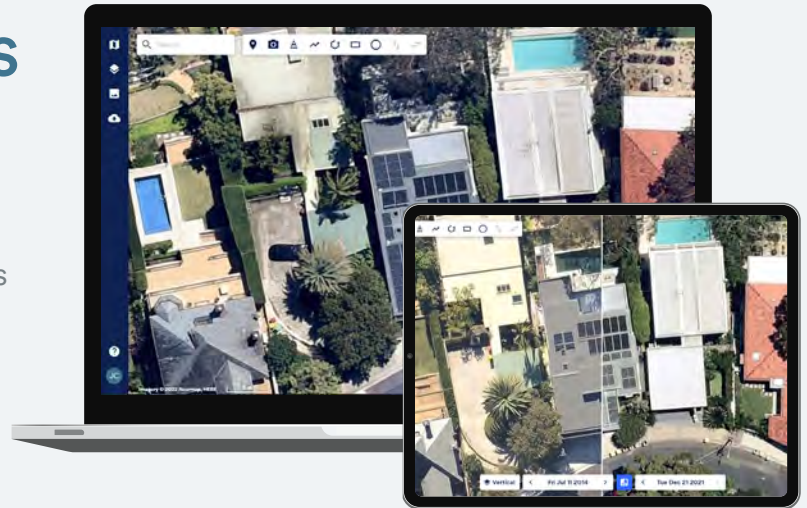
- Trisha Favulli
Director of Assessing, Town of Falmouth

"Nearmap affords us the ability have a birds-eye view of our city not just once a year, but several times per year, at a resolution that is rarely obtainable within our budget. Going with Nearmap just makes sense for our GIS applications across the organization."

- Matthew W. Bradbury
GIS Administrator, City of Redlands, CA

PRODUCT SPECIFICATIONS

Nearmap is a subscription-based service with flexible options tailored to suit your needs. Your users will always have access to reliable, current imagery to more confidently derive insights and make decisions, helping save time and reduce costs through virtual site visits.



Vertical/ortho

- Resolution: 2.2 – 3” GSD
- Absolute Horizontal Accuracy: 8.6 – 23.6” RMSEr
- High-resolution, top-down imagery
- Measure length, area, or radius in MapBrowser



Panorama

- Resolution: 2.2 – 3” GSD
- Multi-perspective aerial views at a 45-degree angle
- View all cardinal directions—N, S, E, W—in a seamless mosaic



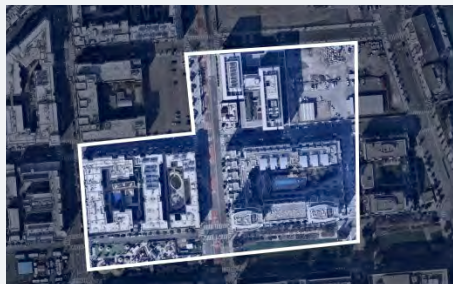
Oblique

- Resolution: 3” GSD
- Multi-perspective aerial views at a 45-degree angle
- View all cardinal directions with a gallery of individual source images
- Accurate height, slope, and roof area measurements



GeoData Link

- Integrate your parcel and street data directly into Nearmap's web platform, and MapBrowser
- Overlay and view your data on top of Vertical, Oblique & Panorama imagery
- Search by Parcel ID numbers to retrieve parcel detail information



3D Datasets

- 360-degree, immersive view of 3D textured mesh
- Pan and zoom, measure height, length, pitch, area, and elevation (RL values)
- 3D data sets: DSM, Point Cloud, Textured Mesh, True Ortho
- Available via MapBrowser or offline delivery

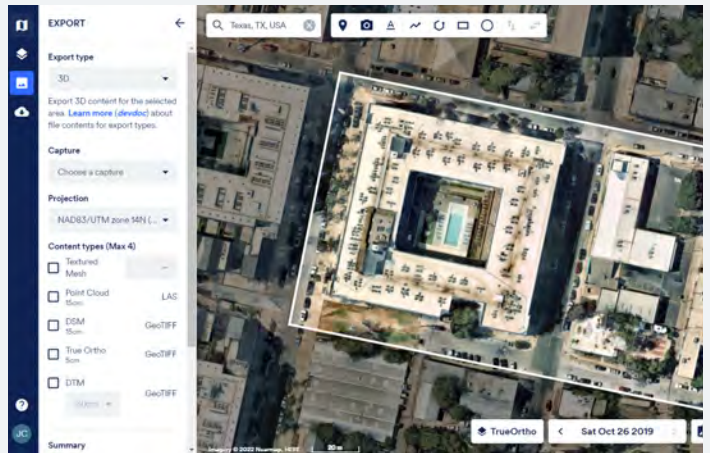
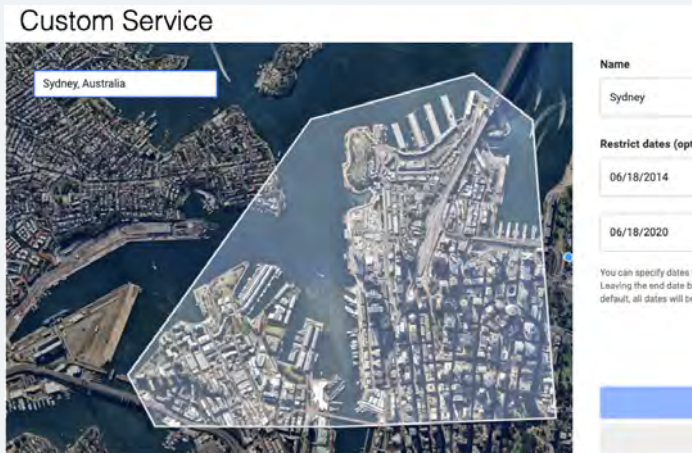


AI Datasets

- View AI Layers in MapBrowser to help you identify objects and other location attributes
- On-demand export and APIs for easy third-party integration
- Growing list of AI Packs: solar panels, vegetation, building characteristics, surfaces, and more

EASY TO USE & INTEGRATE

Conveniently use four different methods to integrate release ready Nearmap Vertical, Oblique, 3D and AI content into your preferred GIS, CAD, 3D visualization, and asset management workflow applications. Additionally, Nearmap also offers various APIs for your bespoke needs. For more information, please visit docs.nearmap.com

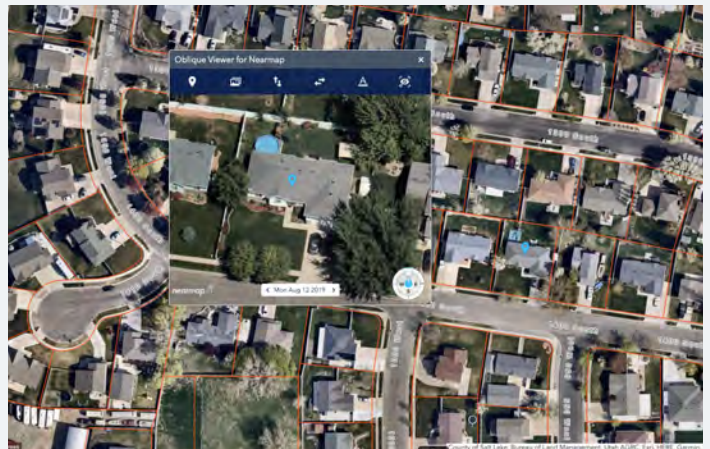
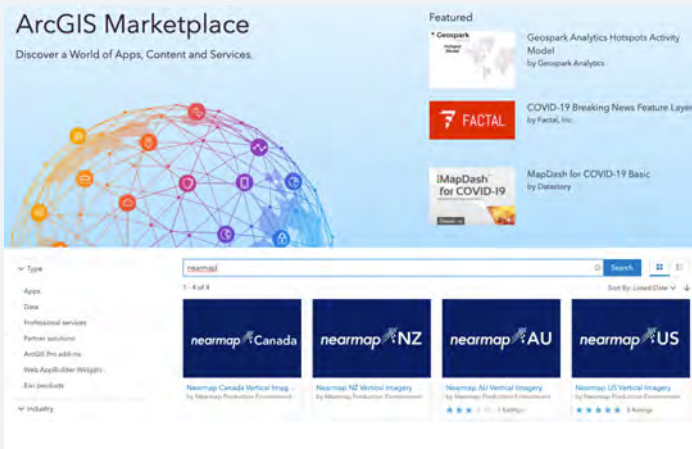


WMS 2.0 (Web Mapping Service)

Auto-generate a URL, copy and paste URL to stream Nearmap Vertical content. Perform geofencing and time navigation

MapBrowser Export

Simple, intuitive web application with easy export of georeferenced Nearmap Vertical, 3D and AI content



ArcGIS Marketplace

Stream Nearmap Vertical content into ArcGIS platforms and ArcGIS compatible platforms

Nearmap Oblique for ArcGIS

An "Oblique Viewer" widget that can be used within apps made with ArcGIS Web AppBuilder to stream Nearmap Oblique Content

A few of our government partners



(ArcGIS Online, ArcGIS Enterprise, ArcGIS Pro, ArcGIS Collector, ArcMap, ArcGIS Survey 123, ArcGIS Web AppBuilder)



ABOUT US

Nearmap provides easy, instant access to high resolution aerial imagery, city-scale 3D content, AI data sets, and geospatial tools. Using its own patented camera systems and processing software, Nearmap captures wide-scale urban areas in the United States, Canada, Australia, and New Zealand several times each year, making current content instantly available in the cloud via web app or API integration. Every day, Nearmap helps thousands of users conduct virtual site visits for deep, data-driven insights — enabling informed decisions, streamlined operations and better financial performance.

Founded in Australia in 2007, Nearmap is one of the largest aerial survey companies in the world.



www.nearmap.com