

NEARMAP FOR ROOFING

A smarter way to inspect your roofing jobs

SEP 2020 | WAVERTON, NSW AU

Just about every structure requires a roof — whether it's a house, school, hospital, or commercial building. The large stock of residential and commercial roofs reaching the end of their expected lifespan, together with an increase in severe weather events, will continue to drive the demand for ongoing roof repair and replacement projects across the country.

Roofers oversee the entire process of installation or repair and ensure that the roofing is completed precisely according to state and building regulations, as well as manufacturers' specifications. From labour to materials, a roofer must be able to give a well-informed, realistic estimate of the project to remain competitive in the market — and we know that winning a job is a resource-intensive exercise.

Nearmap offers a catalogue of high-resolution aerial imagery that allows roofers to carry out roof inspections from the comfort of their office and on the road. Roofers can now gain a competitive edge to win more business, at a fraction of cost and time. For instance, Nearmap provides a way for roofers to:

- Reduce truck rolls and improve operational efficiency
- Obtain roof measurement in minutes, not days
- Identify risks & hazards on the site, ahead of time
- Assess and document roof damage before climbing roofs
- Accelerate the sales cycle and optimise field activities

Sometimes you just need to do a quick measurement to see if the numbers stack up. We get it.



Reduce truck rolls and improve operational efficiency

Nearmap has an extensive capture program that covers 89% of Australia's population, including the top 140 cities and towns, with more than 446,700 square kilometres covered annually. With Nearmap, you can confidently qualify prospects before taking on any significant expense to send crews on site.



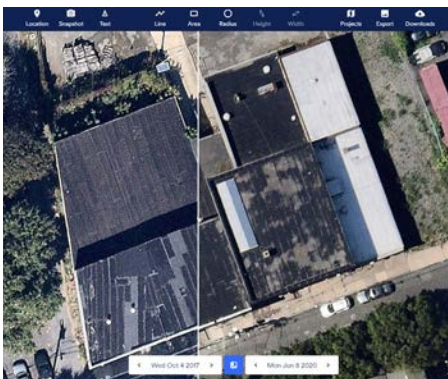
Obtain roof takeoffs in minutes, not days

Instantly access Nearmap high resolution imagery on the go with our web application, MapBrowser. Zoom in to inspect the roof condition and identify possible obstructions such as the chimney, solar panels, antennas, external piping, HVAC systems, and more. With Nearmap, you can measure before you go and reduce time on site.



Reduce risks and plan the site ahead of time

Working at height doesn't come without risk. Nearmap location content can be used to identify potential hazards for pre-construction site planning to improve safety for the crew and minimise disruption to the local community — such as fall prevention control, perimeter containment screening, ladder placement and security.



Assess and document roof damage before going on site

Nearmap captures large urban areas up to six times a year, so you always have up-to-date aerial imagery at your fingertips, dated and timestamped. With more than a decade of imagery in most coverage areas, you can compare historical imagery to understand what's changed over time and gather insights that would otherwise be difficult to gain efficiently.



Accelerate the sales cycle and optimise field activities

Roof inspections can be done in a few minutes in MapBrowser while on the phone with customers. With Nearmap, you can increase your chance for a one-stop-close and impress your customers with a proposal before your competitors.

NEARMAP PRODUCT SPECIFICATIONS

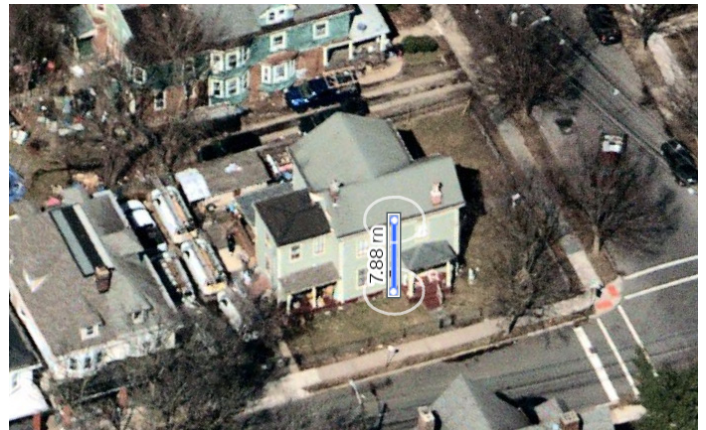
Nearmap is a subscription-based service with flexible options tailored to suit your business needs. Every Nearmap user can be set up quickly with immediate access to our web platform, MapBrowser — no additional software required.

In aerial mapping applications, the Ground Sampling Distance (GSD) represents the distance, measured on the ground, between the centres of two adjacent pixels of a digital image. An image with 5cm/pixel GSD means the locations of two consecutive pixels are 5cm apart on the ground. Why is this important? It means the sharper the resolution and lower the GSD, the greater the clarity and ground truth you'll have when viewing a project site.



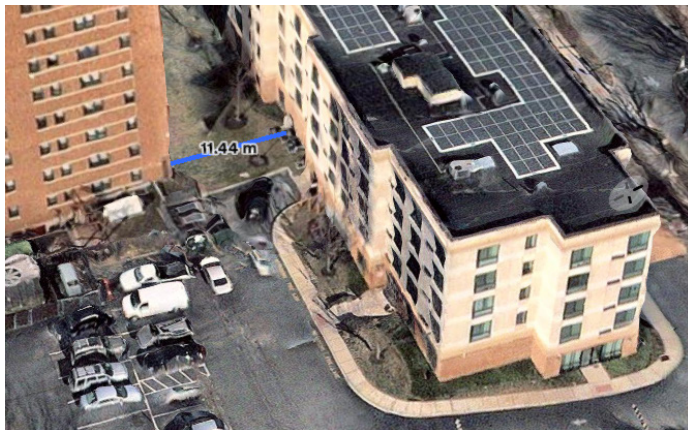
Nearmap Vertical

- GSD: 5.6 – 7.5 cm
- High resolution top-down imagery
- Measure length, area, or radius on MapBrowser



Nearmap Oblique

- GSD: 7.6 cm
- Multi-perspective aerial view at a 45-degree angle
- View four directional aspects with a gallery of individual source images



Nearmap 3D

- 360-degree, immersive view of 3D textured mesh in 3D Viewer
- Pan & zoom, and measure height, length, pitch, area, and elevation (RL values)
- On-demand export of 3D content: textured mesh, DSM, true ortho, point cloud and DTM/DEM
- DSM & True Ortho API for advanced roofing applications



Nearmap AI

- View AI Layers in MapBrowser to help you identify objects and other location attributes
- On-demand export and APIs for easy third-party integration
- Growing list of AI Packs: solar panels, vegetation, building characteristics, surfaces, and more

WHAT OUR CUSTOMERS SAY

"When somebody calls requesting a quote, I access Nearmap to get an understanding of the existing site and its surrounds. I'll refer to the relevant planning regulations to gauge requirements and then have a clear picture of what needs to be done without even leaving my desk."

— Simon Smith
Director, Absolute Building Consultancy

"At the time (right after Cyclone Marcia), Nearmap had already snapped current imagery to show the extent of the damage. All we needed to do was zoom into any given property, measure it, and let the customer know what the project and cost would look like."

— Shane Yore
Operations Manager, Roth Plumbing

ABOUT US

Founded in 2007, Nearmap is leading aerial imagery and geospatial technology provider, delivering content at scale and covering large urban areas throughout Australia, the United States, New Zealand, and Canada.

Nearmap is one of Fast Company's 10 Most Innovative Companies of 2020 and is a Sydney-headquartered technology pioneer listed on the ASX 200. Combining patented plane-mounted camera systems, a world-class survey operations capability, and an automated photogrammetry pipeline to provide imagery within days of capture, Nearmap provides quality at scale — covering large urban areas to empower businesses to perform virtual site visits and make critical business decisions without leaving the office.



www.nearmap.com