

# ABOUT NEARMAP.



Captured: 8 Nov 2017  
Corona del Mar, CA





# NEARMAP'S FIRST DECADE.

- Specialize in high-resolution aerial imagery delivered via cloud
- Regularly capture 71% of the U.S. (430 largest urban areas)
- Used within several key industries – **Government, AEC, Real Estate, Insurance, Utilities, Telecom, Solar/Roofing/Paving**
- 8,500+ Customers
- 87,000+ Users accessing imagery regularly
- We've taken 60M individual photos — 1 petabyte of storage
- Recognized by Esri as Best New Content Partner 2017



Esri Partner Conference  
2017 Award Winner  
Best New Content Partner



Captured: 8 Jan. 2018  
Atlanta, GA

**nearmap** 



# WHY NEARMAP IS A LEADER IN LOCATION CONTENT.



Captured: 13 Jun 2017  
San Diego, CA





# WHAT MAKES NEARMAP DIFFERENT?

We capture, manage, and deliver current, consistent location content faster than anyone.



Captured: 27 Oct 2017  
New York City, NY





# WHAT MAKES NEARMAP DIFFERENT?



**CURRENT** Photomaps of U.S. urbanized areas are updated frequently



**CLEAR** Nearmap imagery is sub-3" GSD, which is several times sharper than free satellite imagery



**CHANGE** All historical captures are maintained for easy change detection and analysis



**CLOUD-BASED** HD aerial maps are accessible instantly through the cloud



**CONSISTENT** All forms of Nearmap imagery are provided at the same specs across all locations



Captured: 27 Oct 2017  
New York City, NY



# HOW NEARMAP CREATES & DELIVERS AERIAL MAPS.



Captured: 30 July 2017  
Baton Rouge, LA

**nearmap**



# NEARMAP HYPERCAMERA.

Vertical and 4-way oblique imaging system





# HOW NEARMAP CREATES AERIAL MAPS.



## FAST AERIAL SURVEY OF LARGE AREAS

- Patented HyperCamera
- Collects large areas
- All imagery is high-res (Sub-3" GSD)



## SCALABLE CLOUD-BASED IMAGERY PROCESSING

- Patented processing
- Publishes within days
- Identifies triangulation points
- Creates DEM
- Ortho-rectifies images
- Uninterrupted mosaic



## DESKTOP-READY DATA SUPPORTING BUSINESS NEEDS

- Instant access
- Industry-leading cloud service
- Accessible via MapBrowser
- Integrates with GIS, CAD
- 3<sup>rd</sup> party applications



Captured: 1 Oct 2017  
Louisville, KY



RAPID, INDUSTRY-LEADING DELIVERY

**nearmap**



# NEARMAP HD LOCATION CONTENT.



## VERTICAL

- High-res top-down i.e. “ortho” imagery
- Measure line, area, or radius
- Overlay roads
- Smooth, uninterrupted pan & zoom
- Seamless integration with GIS & CAD apps



## PANORAMA

- Multi-perspective aerial views
- View images from four cardinal directions
- Smooth, uninterrupted pan & zoom
- Mosaic allows for continuous view without “geo-fencing”



## OBLIQUE

- Multi-perspective aerial views
- View as mosaic or access individual source images
- Accurate measurement of height



## DSM & 3D

- Highly accurate Digital Surface Models
- 3D point cloud and mesh



Captured: 16 Nov 2017  
San Diego, CA



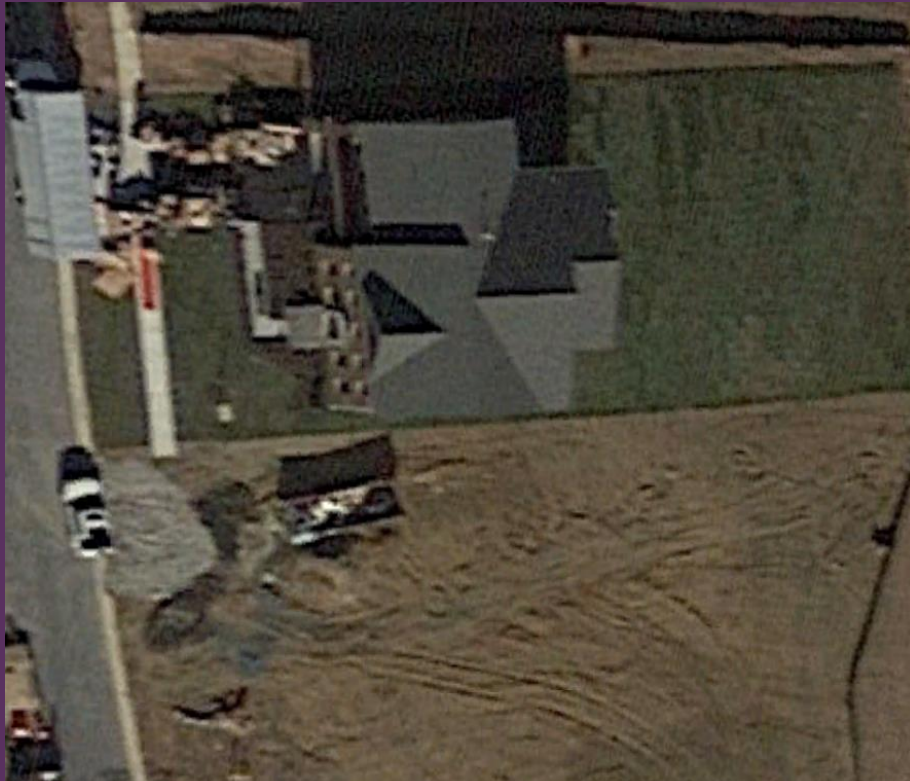
# IMAGERY COMPARISON

FEATURE	SATELLITE	DRONE	NEARMAP
COVERAGE	✓		✓
CURRENT		✓	✓
CLEAR		✓	✓
CONSISTENT	✓		✓
CLOUD	✓		✓

Nearmap HD aerial maps can be accessed via our easy-to-use MapBrowser or integrated into purpose built solutions



# COMPARISON OF NEARMAP VS SATELLITE.



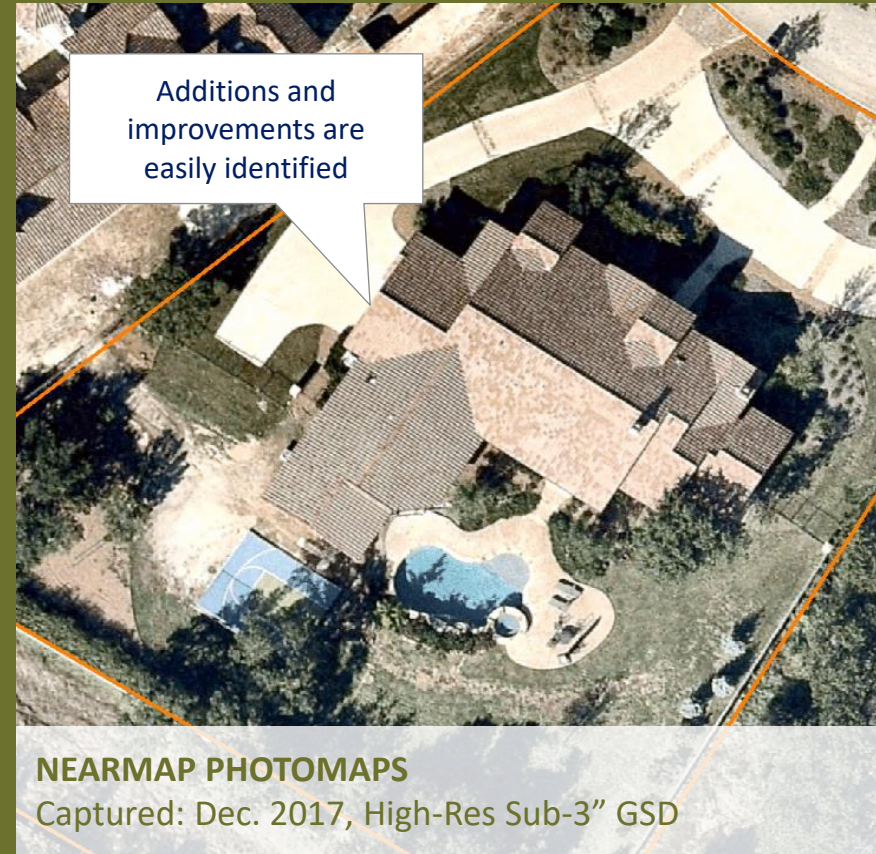
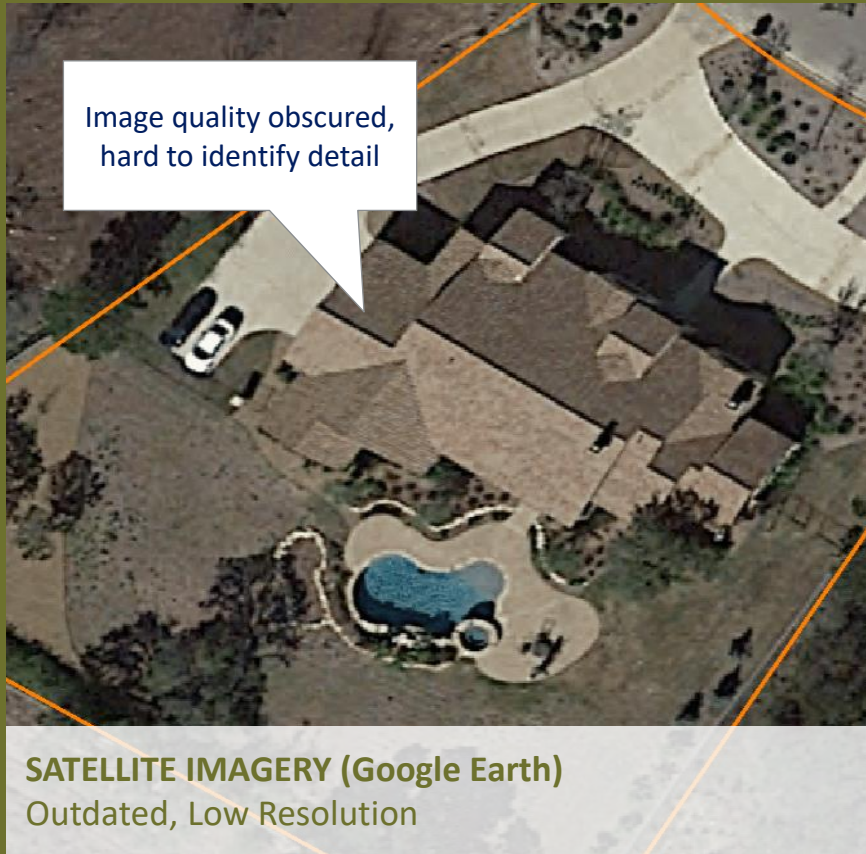
**SATELLITE IMAGERY (Google Earth)**  
Outdated, Low Resolution



**NEARMAP PHOTOMAPS**  
Captured: Dec. 2017, High-Res Sub-3" GSD



# COMPARISON OF NEARMAP VS SATELLITE.





# 2018 U.S. COVERAGE PROGRAM: Nearmap Vertical

**>71%**

Total U.S. Population

**430**

Urbanized Areas

**330,000+**

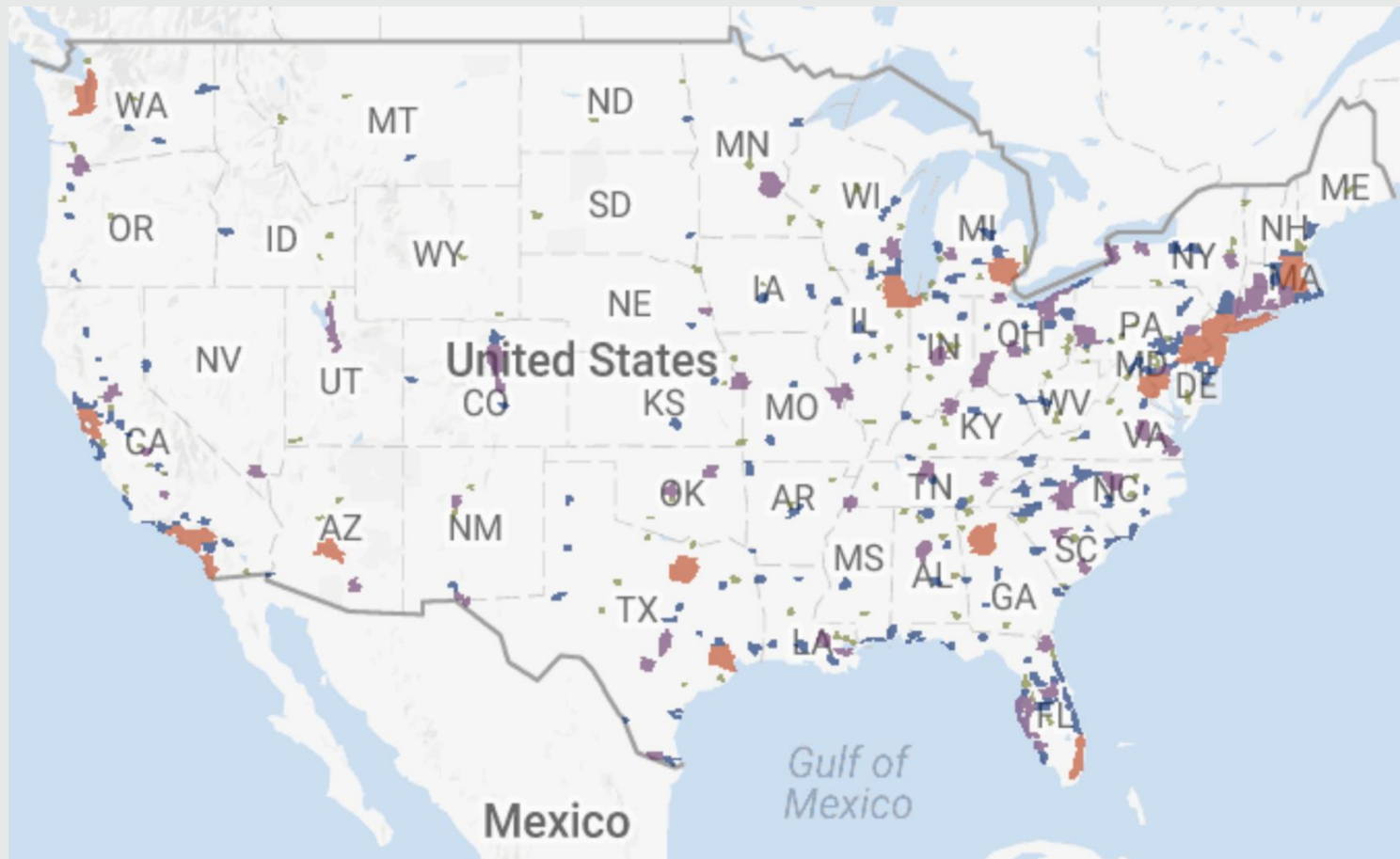
Square Miles

**Sub-3"**

Ground Sampling Distance



# 2018 U.S. COVERAGE PROGRAM: Nearmap Vertical



## MAIN METRO AREAS

3 Vertical Surveys



## CITIES

2 Vertical Surveys



## REGIONAL CENTERS

1 Vertical Survey



## REGIONAL CENTERS

1 Vertical Survey - Planned





# 2018 U.S. COVERAGE PROGRAM: Nearmap Panorama & Oblique

**>53%**

Total U.S. Population

**78**

Urbanized Areas

**99,000+**

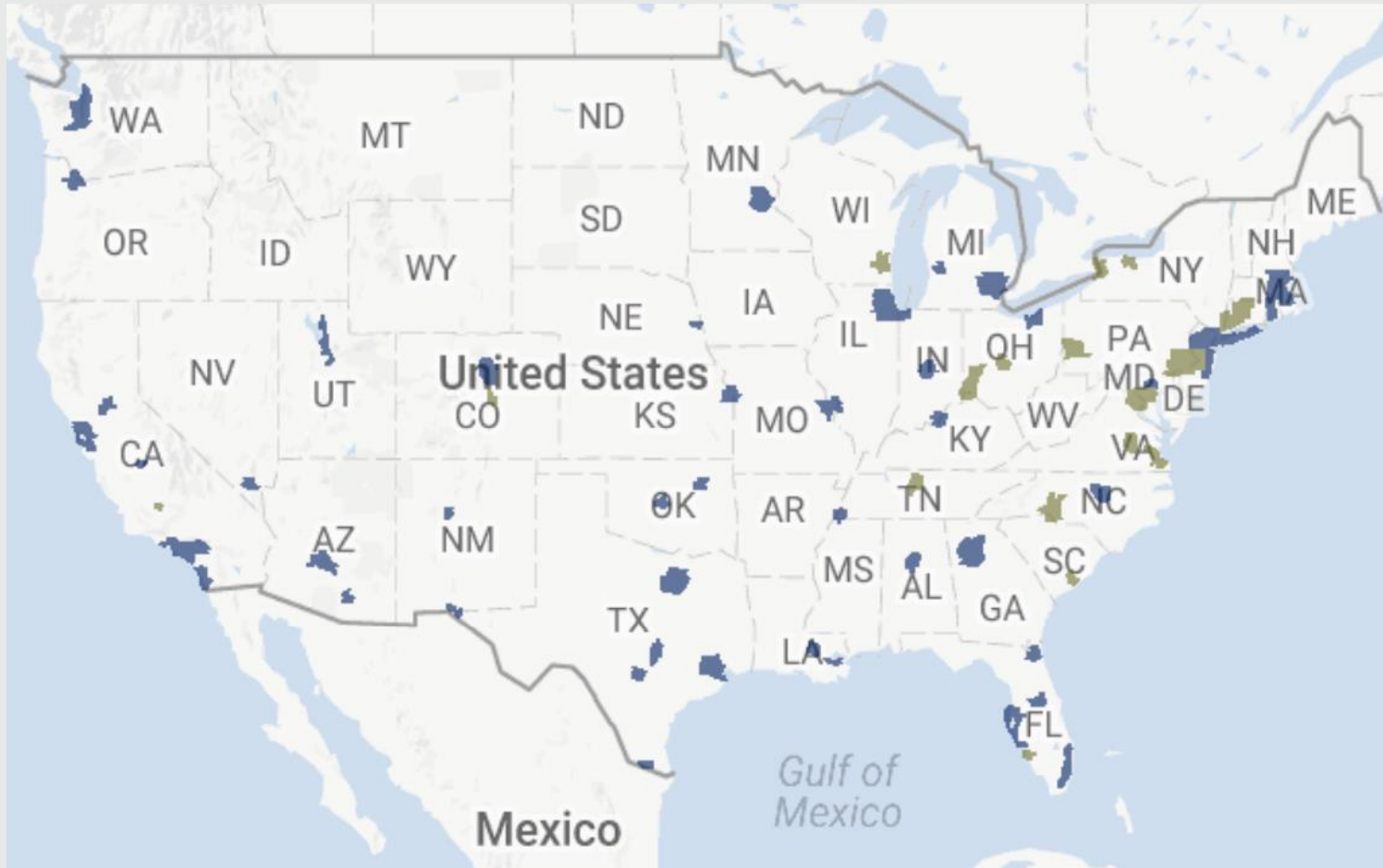
Square Miles

**Sub-3"**

Ground Sampling Distance



# 2018 U.S. COVERAGE PROGRAM.



## METRO AREAS

1 Oblique Survey



## METRO AREAS

1 Oblique Survey - Planned





# NEW & EMERGING FORMS OF LOCATION CONTENT.



Captured: 30 July 2017  
Baton Rouge, LA

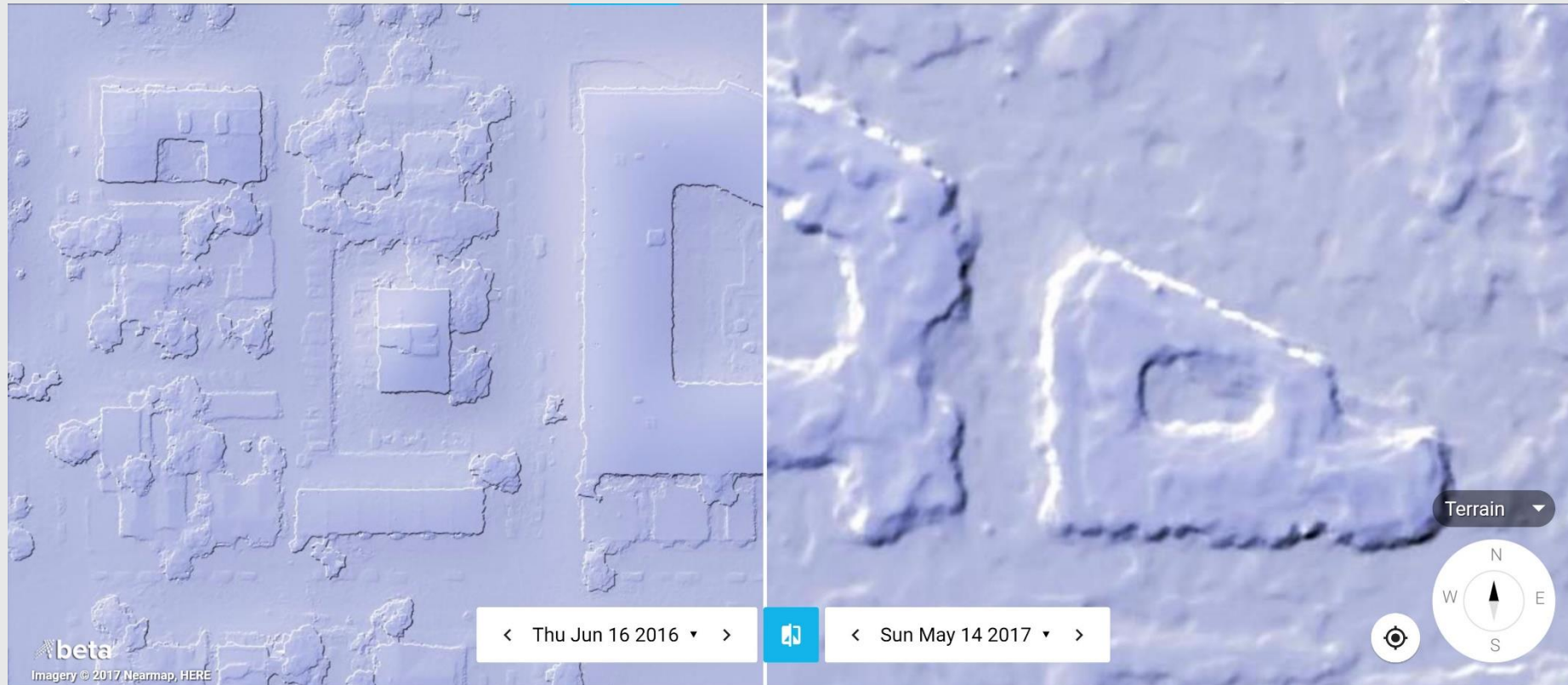


# EXAMPLE OF NEARMAP 3D.





# EXAMPLES OF NEARMAP DSM.





# HOW ARE CUSTOMERS USING NEARMAP?



Captured: 9 May 2017  
Boca Raton, FL

**nearmap** 



# TOP USES.

**Explore Your Environment** with ease, clarity and minimal impact

**Unlock Opportunities** to make more informed decisions

**Transform the Way You Work** into a productive, strategic advantage



Captured: 5 Aug 2017  
Miami, FL



**nearmap**



# CUSTOMER CASE STUDIES



# CASE STUDY: MOMENTUM SOLAR.

## PAIN POINTS

- Rapid expansion – Nationwide
- Inconsistent, low-res satellite imagery
- Constrained views – no seasonal change

## SOLUTION

- Timely imagery = speed and accuracy
- Complete virtual solution drives customer sat
- Immediate opportunity qualification

## IMPACT

- Proposal development: 2 weeks to 2 days
- Leaf-on, Leaf-off: precise lead qualification
- Accurate measurements: 3-4 times faster panel placement proposal

## SPEED TO MARKET

1,000 to 3,000 additional homes qualified per week





# CASE STUDY: CITY OF APEX, NC

## PAIN POINTS

- Hyper-growth required efficient planning
- Out of date, low resolution imagery
- Massive state reimbursements hang in balance

## SOLUTION

- Current imagery inside ArcGIS<sup>SM</sup>
- Accurate measurements without “wheel-walking”
- “Powell-Bill” Reporting to state

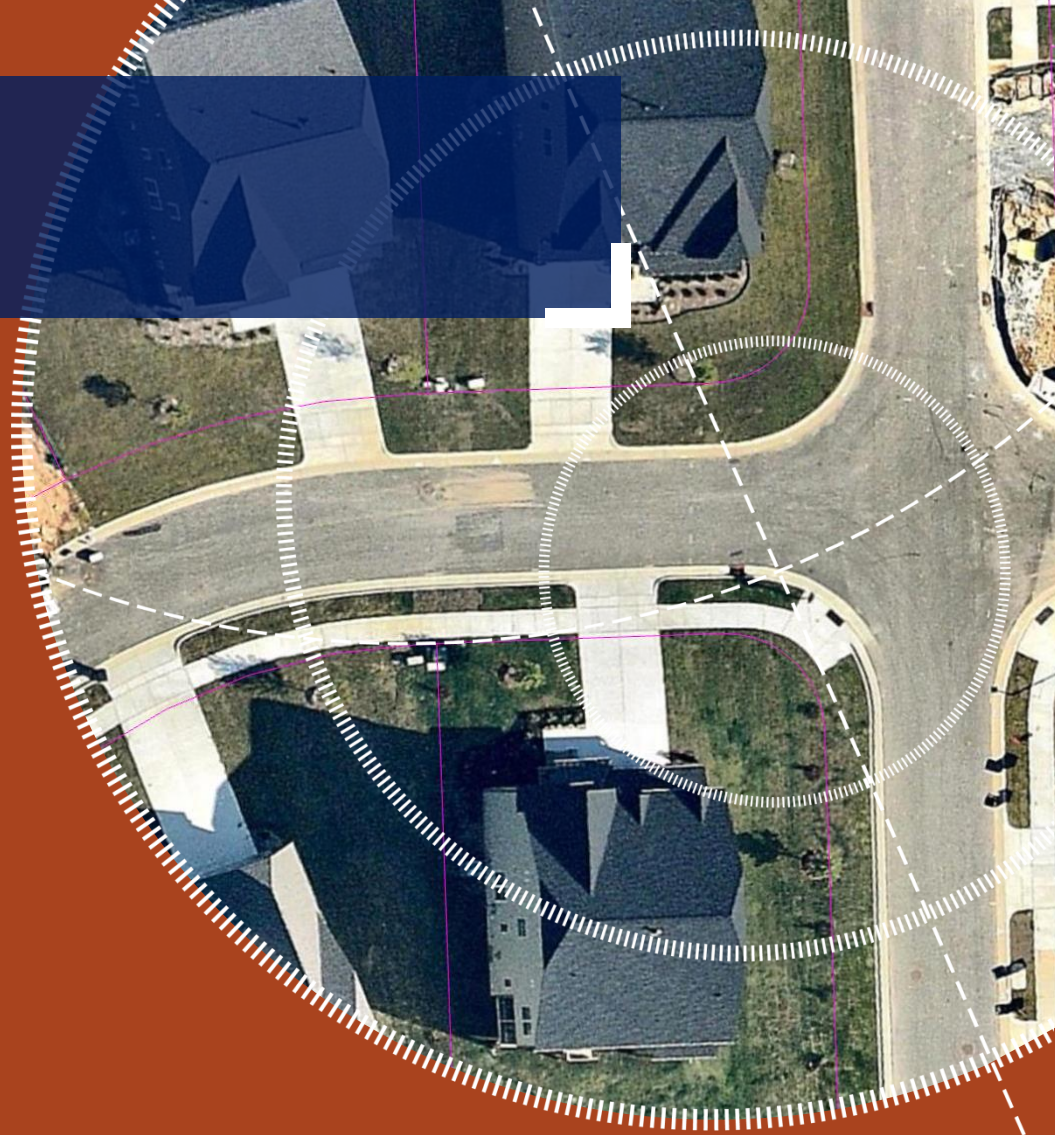
## IMPACT

- Dramatic reduction in site visits
- Rapid response to staff and citizen requests
- Support all government departments

**\$1.4 Million**  
Reimbursed  
from North  
Carolina



Captured: 26 Jan 2018  
Apex, NC





# CASE STUDY: HYRDOMAX USA

## PAIN POINTS

- Low resolution, inconsistent satellite imagery
- Location accuracy was low
- High risk projects

## SOLUTION

- Clear feature detection
- Scalable solution: Video data, Esri® and Nearmap
- Integrated into work processes

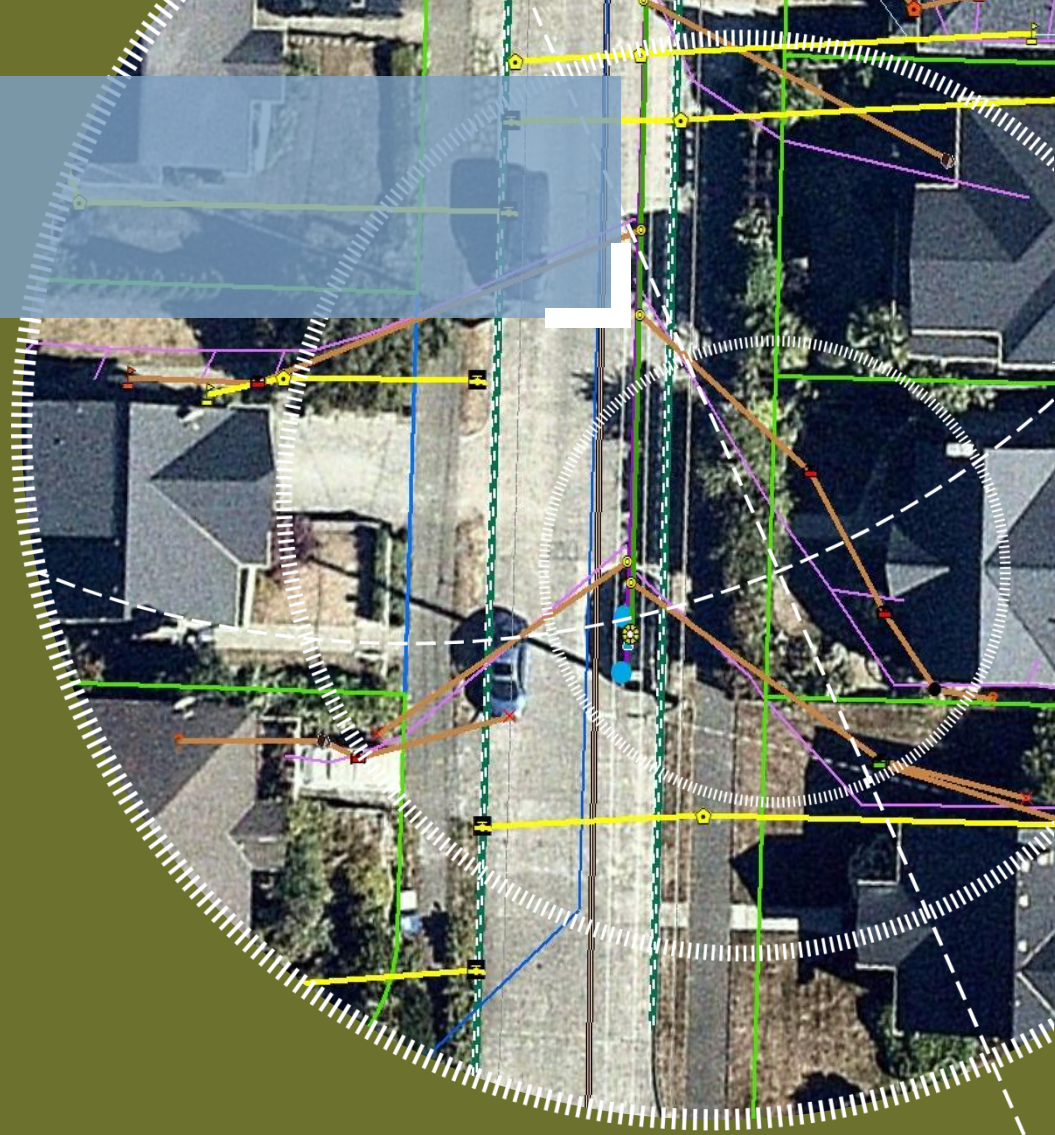
## IMPACT

- Efficient resource deployment
- Improved customer service
- Scalable business growth

## Dramatic Risk Reduction

With improved analysis

**HYDROMAX USA**  
Advanced Water, Wastewater and Gas Data Collection



Captured: 30 Sept 2017  
Louisville, KY

**nearmap**



# THANK YOU.

Learn more at  
<http://go.nearmap.com>



Captured: 21 Oct 2017  
Newark, CA

**nearmap** 