



nearmap

# NEARMAP 3D

A new dimension at your fingertips —  
unearth information others can't find.

SEPTEMBER 2020 | SAN DIEGO, CA U.S.

**Let's face it: the world is not flat.** Sometimes we need a third dimension to better understand a structure in context and imagine what's possible. Maybe you need to model environmental risk with the latest terrain models. Perhaps you want to visualize or validate a building design within the greater construction site. Nearmap 3D offers a frequently updated, comprehensive catalogue of 3D location content on demand.

Our growing library of high-fidelity 3D content works with industry-leading applications, so you can enjoy a seamless workflow on your preferred GIS and design platforms. Derived from our catalogue of high resolution aerial imagery, Nearmap 3D is more than just a pretty picture. You can accurately measure height, elevation, and the distance between buildings — plus export content to further analyze and reimagine the world in minutes, not weeks.

**Nearmap 3D is available in a variety of data and file formats to suit your needs:**

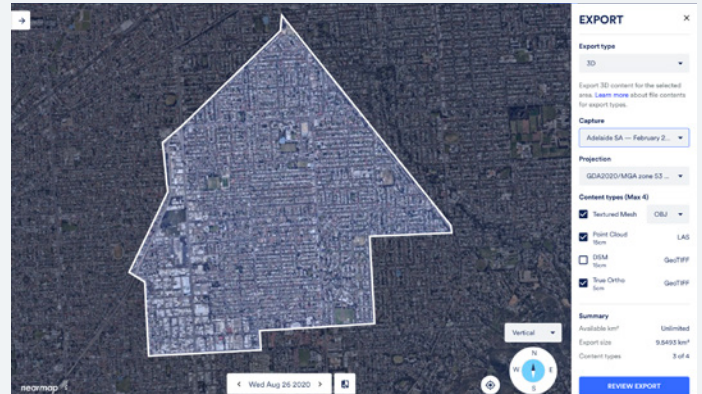
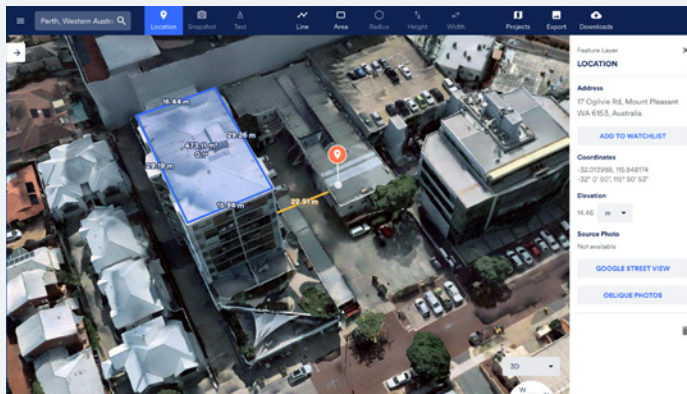
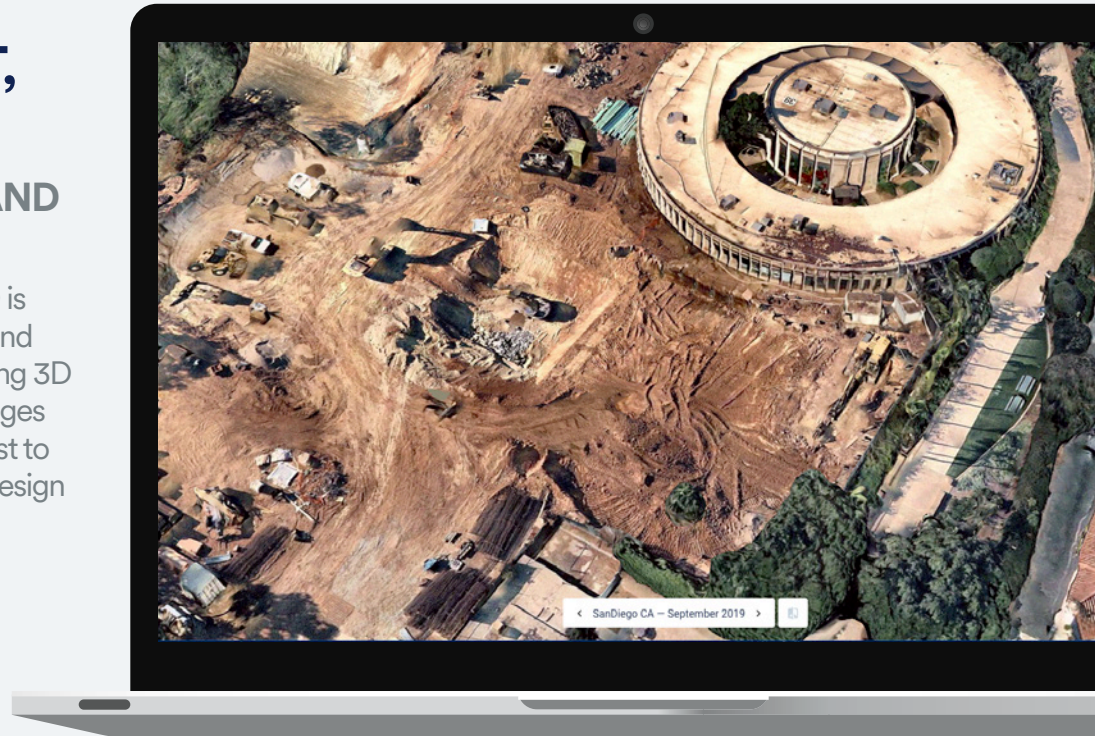
- 3D Textured Mesh
- Point Cloud
- Digital Elevation Model (DEM)
- Digital Surface Model (DSM)
- True Ortho



# EXPLORE, EXPORT, IMPORT

## UPDATED REGULARLY AND AVAILABLE INSTANTLY

Getting started with Nearmap 3D is easy. Perform quick assessment and measurement in MapBrowser using 3D Viewer — or download 3D packages on demand for your area of interest to use inside your preferred GIS or design platform with 3D Export.



## 3D VIEWER

- Unlimited access to the Nearmap 3D textured mesh catalogue
- 3D measurement tool (slope, height, area)
- 3D location tool with elevation measurement
- 3D annotation tool

## 3D EXPORT

- 3D download allowance (by sq mi)
- Export your area of interest up to 20 sq mi\*
- Download as textured mesh, DSM, point cloud, or true ortho
- Data delivered in a few hours or less

\*Exports for areas greater than 20 sq mi are available via offline delivery. DEM available for offline export only.

## 3D INTEGRATIONS

Nearmap 3D is compatible with leading third-party platforms including Esri ArcGIS, Autodesk, and Bentley Systems.



ArcGIS Pro



ArcGIS Urban



AUTODESK<sup>®</sup> INFRAWORKS<sup>™</sup>



AUTODESK CIVIL3D



AUTOCAD MAP 3D



SketchUp



Skyline

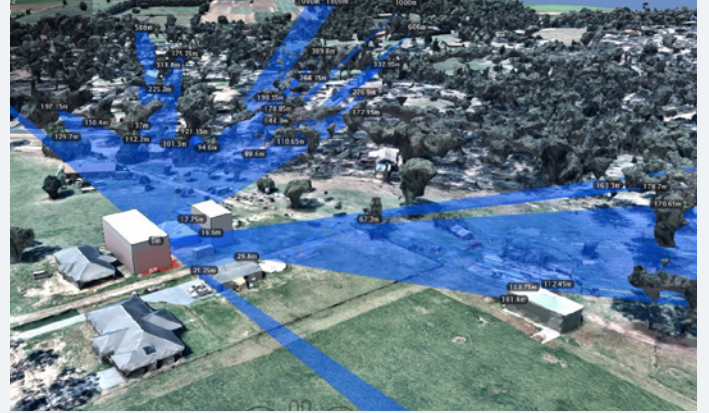


# NEARMAP 3D IN ACTION



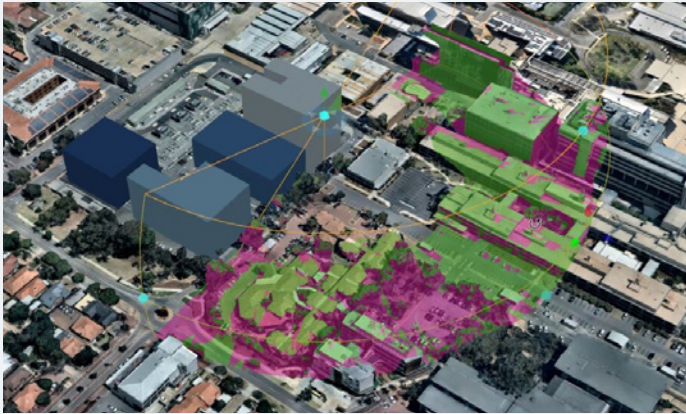
## Architecture, Engineering and Construction

Conduct a thorough feasibility study to assess the scope of project, so that you can confidently jumpstart concept development to imagine what's possible.



## Infrastructure Planning and Development

Plan large-scale projects with 3D visualization you can trust — terrain models, brownfield assets, heritage sites, and other cultural and environmental considerations — to support scenario planning and facilitate public consultation.



## Utility Network Planning

Quickly analyze DSM and true ortho data to plot and understand line-of-sight for dense network simulation and coverage expansion planning to support next generation wireless, 5G, and other utility networks.



## Emergency and Public Safety

Visualize vulnerabilities and identify potential emergency sites to empower first responders and give tactical response teams a reliable map of unfamiliar environments.

# WHAT OUR CUSTOMERS SAY

"Certainly it's utilised most effectively at the front end of the project, you know, at that design stage where we really kind of find contextualised information and present that in ways where we would have struggled otherwise."

— Steve Fox,  
BIM Manager and Principal, Architectus



## ABOUT US

Founded in 2007, Nearmap is a leading aerial imagery and geospatial technology provider, delivering content at scale and covering large urban areas throughout Australia, the United States, New Zealand, and Canada.

Nearmap is one of Fast Company's 10 Most Innovative Companies of 2020 and a Sydney-headquartered technology pioneer listed on the ASX 200. Nearmap combines patented plane-mounted camera systems, a world-class survey operations capability, and an automated photogrammetry pipeline to provide imagery within days of capture. Nearmap provides quality at scale, covering large urban areas to empower businesses to perform virtual site visits and make critical business decisions without leaving the office.



[www.nearmap.com/3D](http://www.nearmap.com/3D)